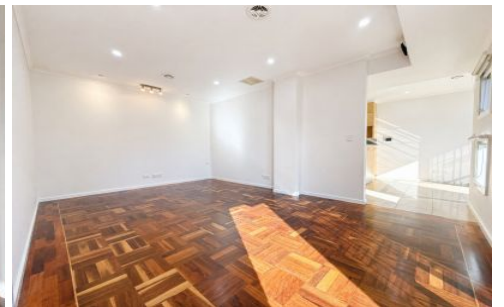


RYAN LANE.



1A Wattle Grove SEAHOLME VIC

4  2  2 

Well-located, well-presented and well-proportioned, this contemporary home could mean the end to your property search! Just around the corner from Seaholme Train Station and a short walk to Seaholme Primary School, this is the definition of convenience and accessibility.

- * Three bedrooms, master with WIR and ensuite
- * Formal lounge/4th bedroom downstairs
- * Spacious kitchen with stainless steel appliances including dishwasher
- * Light filled lounge & study with built in desk
- * Separate powder rooms & laundry
- * Main central bathroom with large shower & bath
- * Split system heating & cooling
- * Ducted vacuum system

[For full version visit the website](#)

Type : Townhouse

Price : \$ 720 per week

View : <https://www.ryanlane.com.au/lease/vic/west/seaholme/residential/townhouse/8685841>



Dana Lindemann

03 9398 3888

0477 607 233

<https://www.ryanlane.com.au>

55A Blyth Street Altona VIC
03 83549790