

RYAN LANE.



3 Lily Street Violet Town VIC

3 🏠 3 🚗 5 🚗

This Magnolia Verandah Homes brand new custom design custom build is a home for the most discerning. An elegant country style house in the hamlet of Violet Town, nestled between Euroa and Benalla, minutes from the Hume Freeway, two hours north of Melbourne. Violet Town has its own station with direct V/Line trains to Southern Cross Melbourne, Albury and Sydney. "Magnolia House" is located a couple of minutes walk to all local amenities, school, shops and sporting facilities and is home to a thriving monthly community market.

"Magnolia House" has the latest 7 star energy rating, with town water and electric connections, double glazed external french doors and solid wooden doors throughout.

Type : House
Price : \$1,125,000 - \$1,175,000
Land Size : 840 sqm
View : <https://www.ryanlane.com.au/sale/vic/shepparton-central-north/violet-town/residential/house/8682533>

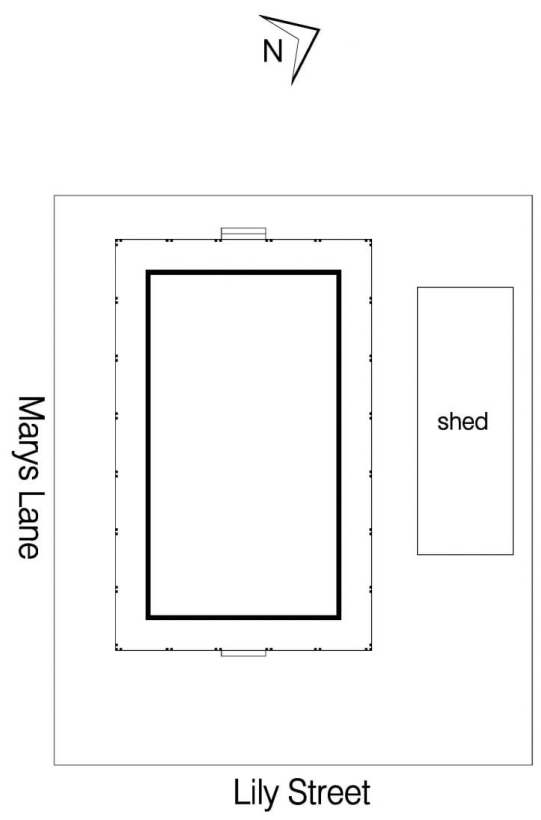
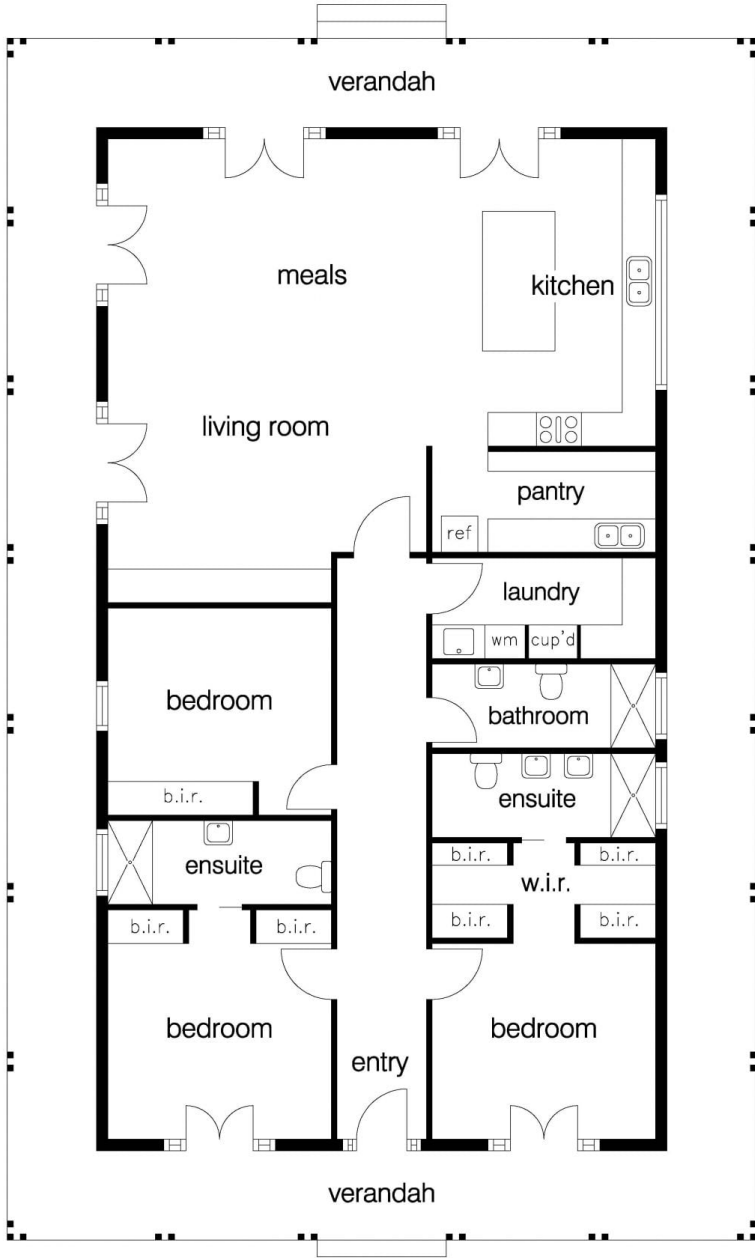


Anthony Molinia
9398 3888
0418 204 804

[For full version visit the website](https://www.ryanlane.com.au)

<https://www.ryanlane.com.au>

55A Blyth Street Altona VIC
03 83549790



3 Lily Street, Violet Town
