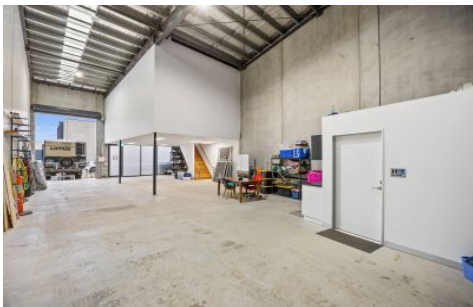


RYAN LANE.



12/20 Ponting Street Williamstown VIC

2 🚗

Whether you're expanding your business or upgrading your current warehouse and office space, this outstanding unit in the highly sought-after Mode Estate delivers the perfect solution.

Positioned for convenience and privacy, this corner-end unit offers direct gate access and an efficient layout designed to support smooth daily operations. Located just moments from the freeway and surrounded by quality operators, this is a workplace that reflects performance and professionalism.

Areas

Warehouse: 172 sqm

[For full version visit the website](https://www.ryanlane.com.au)

Type : Industrial
Price : Contact Agent
Building Size : 227 sqm
View : <https://www.ryanlane.com.au/sale/vic/west/williamstown/commercial/industrial/8618377>

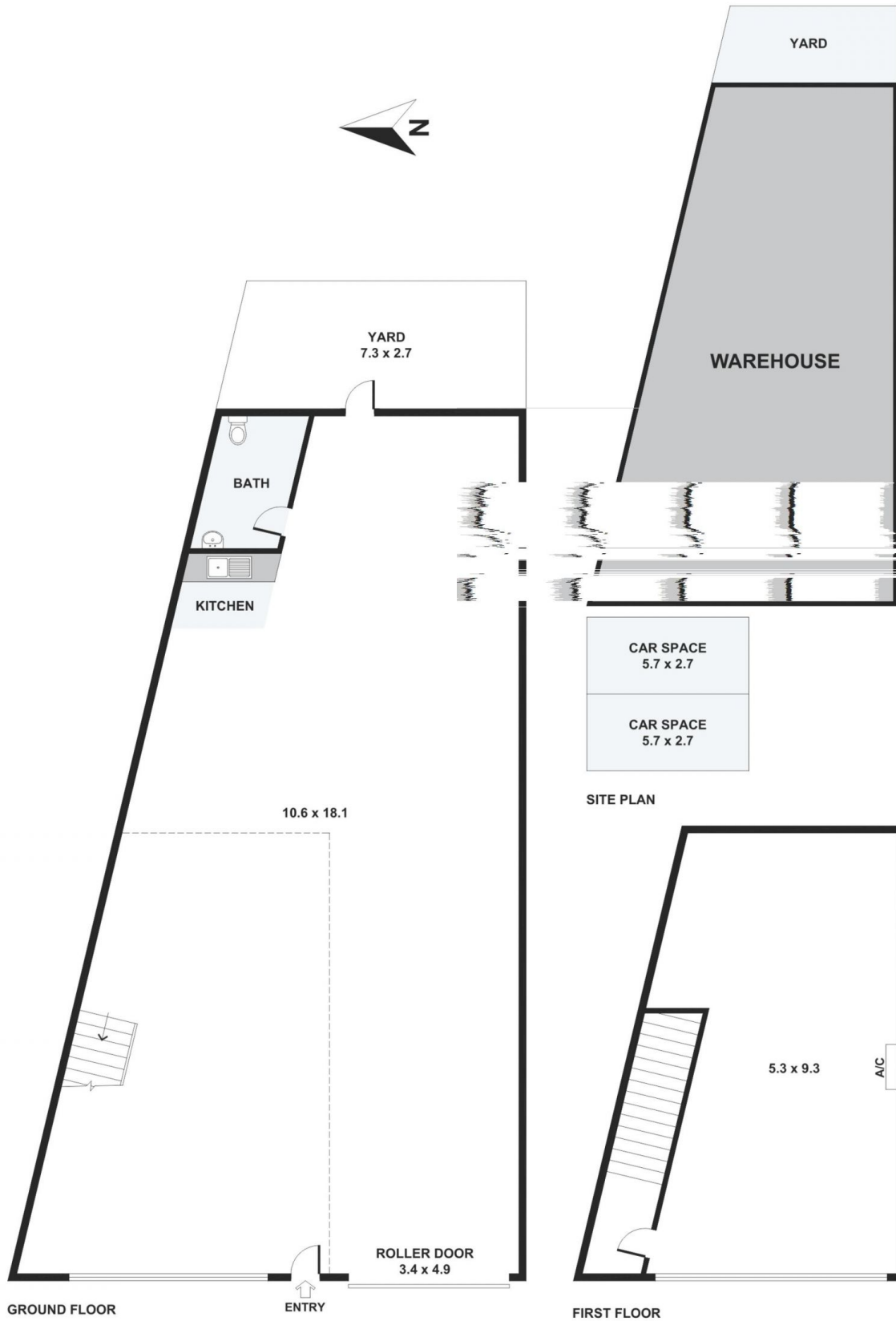


Anthony Molinia
9398 3888
0418 204 804

<https://www.ryanlane.com.au>

55A Blyth Street Altona VIC
03 83549790

12/20 Ponting Street, Williamstown



Please note: All stated dimensions are approximate only. Particulars given are for general information only and do not constitute any representation on the part of the vendor or agent.

